



# **Elevate Program Update**

**Senate**

**May 4 2022**

**Jack Blanchard**

Associate Provost for Enterprise Resource Planning

**ELEVATE**

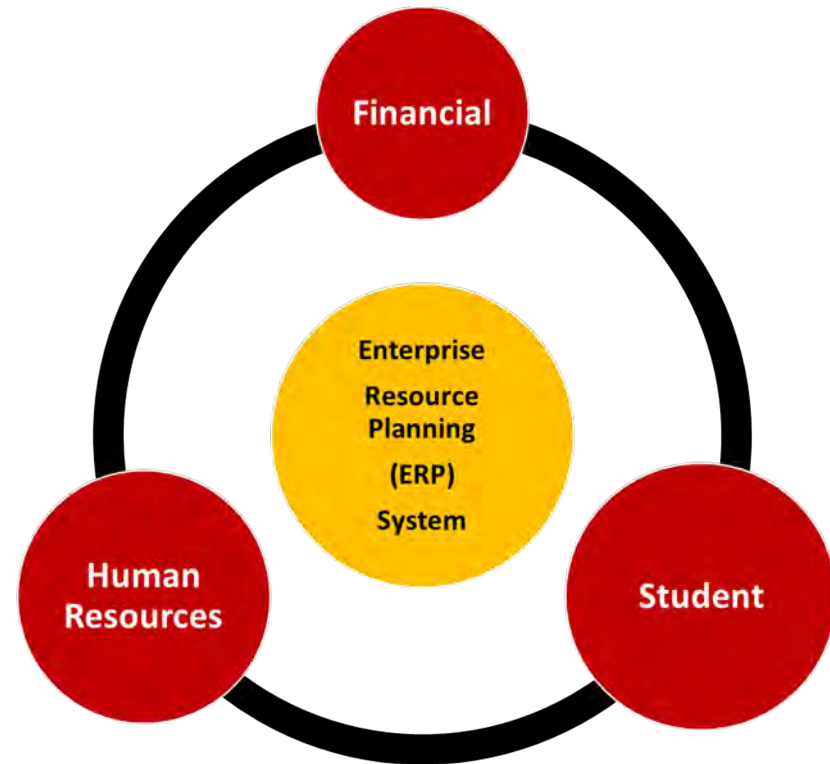


## Agenda:

- 1) Overview of Elevate
- 2) Timeline and progress
- 3) Staff engagement
- 4) Faculty engagement
- 5) Student System
- 6) Keep Informed

## Purpose of Elevate

To modernize our obsolete ERP system to better meet the complex needs of a flagship research university.



## Elevate Program Goals

- Provide a **positive user experience** for students, staff, and faculty.
- Make the university more **efficient and effective** through simplified and streamlined key business processes.
- Allow the university to **accurately collect, report, and analyze data** important for decision-making.
- Ensure **data security and privacy** and meet all regulatory, compliance, and accreditation needs.
- Ensure that our ERP systems are reliable and can be **easily maintained and updated**.

# Elevating our ERP to the cloud with Workday.



# Three Stages of Workday Implementation

2021	2022	2023	2024	2025	2026
------	------	------	------	------	------

**Finance and  
HCM (Human Capital Management)**

Go Live  
July 2023

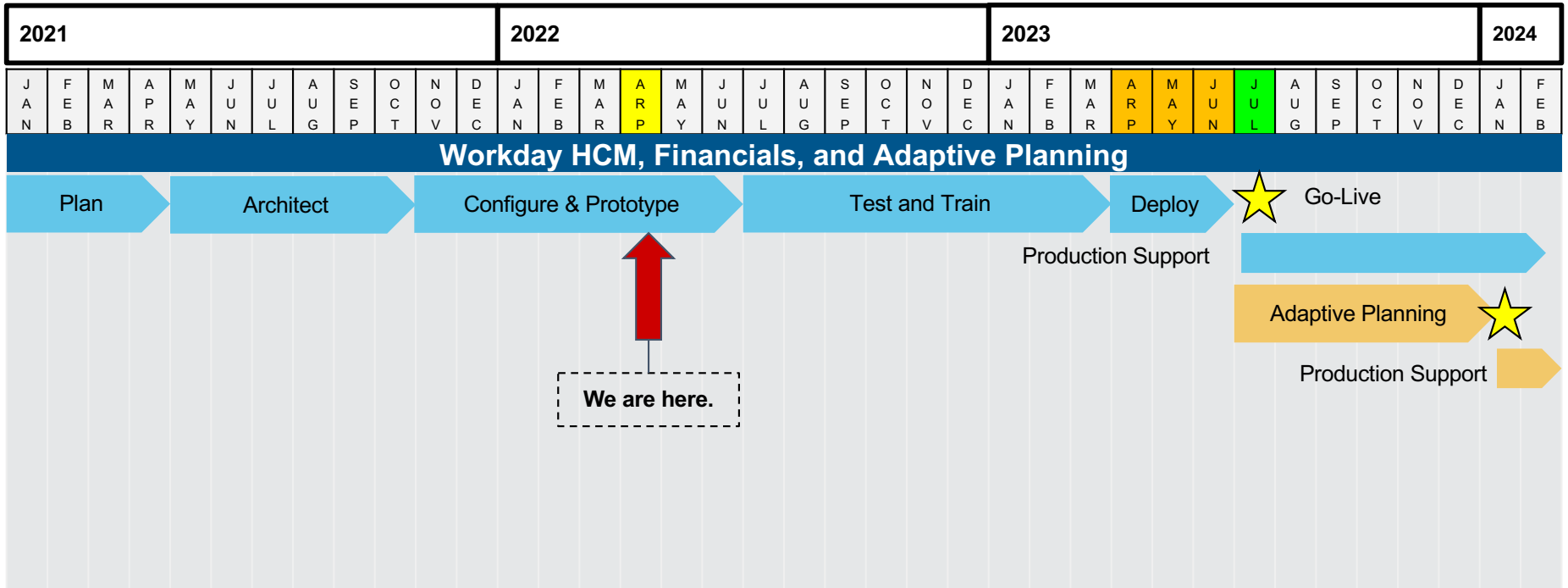
**Adaptive  
Planning  
(Budgeting)**

Go Live  
January 2024

**Student Implementation**

Go Live  
Fall 2026

# Elevate Program Timeline - Phase I

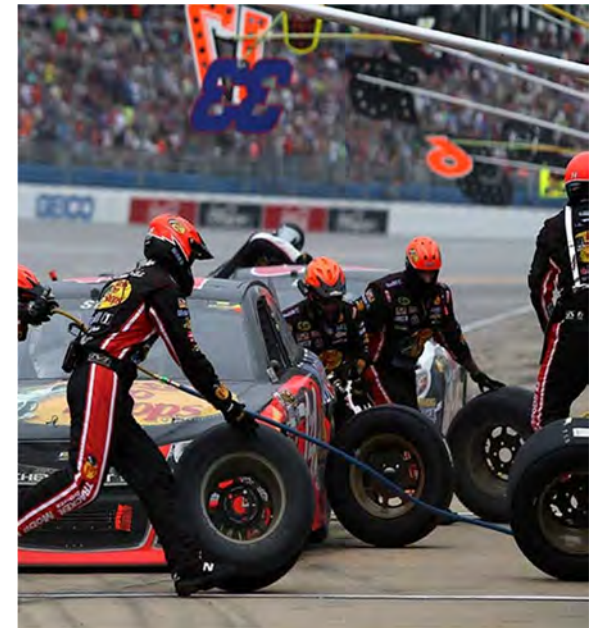
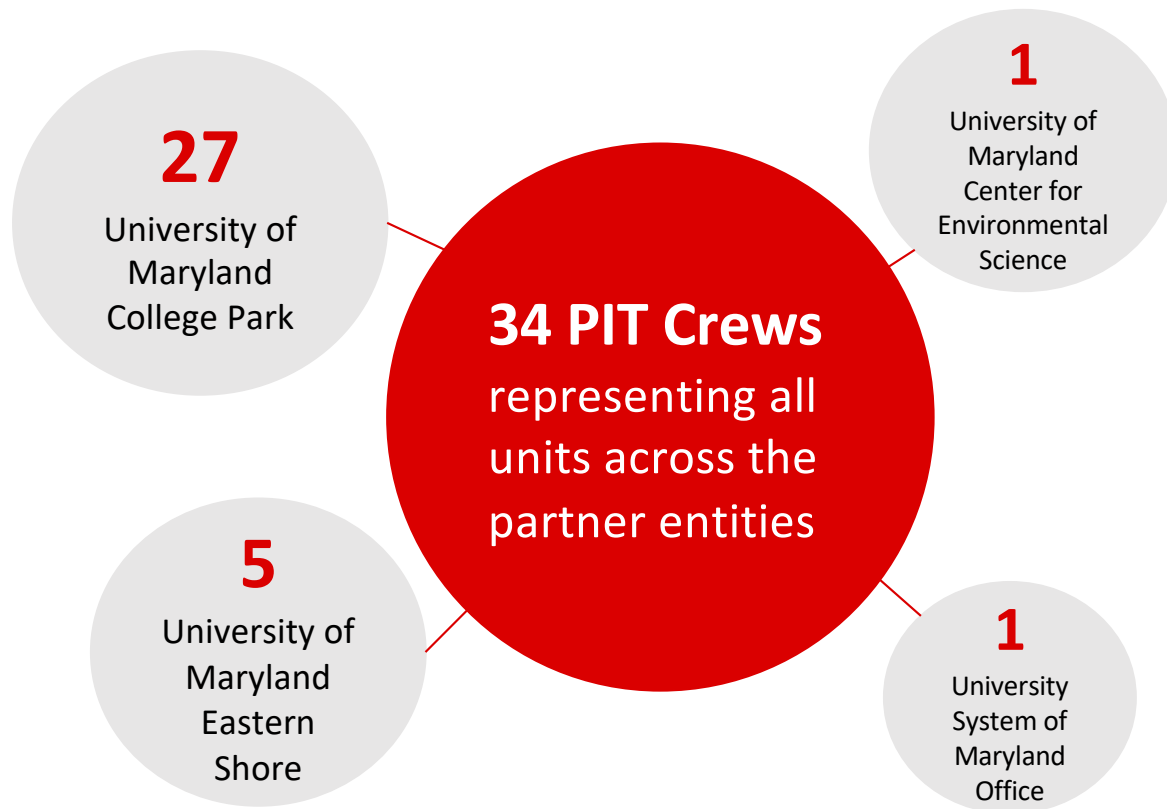


## Ensuring That Workday Will Work for Maryland

- Staff Engagement
- Faculty Engagement



## Project Implementation Team (PIT) Crews



## By the Numbers



4,626

Total Hours  
Dedicated

468

Staff Members  
Involved

2,138

Pieces of  
Feedback. Over  
200 Gaps and  
issues resolved.

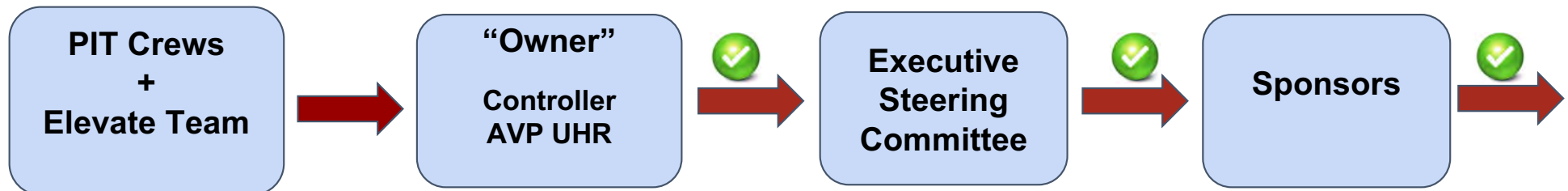
# THANK YOU!

## Workday Design Sign-off

Workday design confirmation and sign-off

Financials = 9 modules (e.g., financial accounting, procurement)

Human Capital Management = 10 modules (e.g., benefits, payroll)



## Faculty Advisory Committee (FAC)

- **Purpose:** To ensure that the Elevate project considers the unique perspectives and needs of **Faculty** users of the HR and Finance systems.
- **Duration:** Now through go-live (July 2023).
- **21 Faculty** have volunteered for the FAC across UMCP and partner institutions (PTK, TTK, instructional, research, Directors, Chairs).

# Student Implementation

- **Initiating early work:**
  - a. Lead staff position.
  - b. Contracts to be signed fall 2022
  
- **Student-Centered**
  - a. Students as key stakeholders.
  - b. Input to understand current problems.
  - c. Input on ways to improve future state.



# How to prepare for the transition. . .

## Keep Informed



- **Town Hall meetings**
- **Functional Overviews**
- **Newsletters**
- **Website**

**Browse Elevate website for videos, newsletters, FAQs, glossary, other material: [elevate.umd.edu](http://elevate.umd.edu)**

**Demonstrations**

Add Your Pronouns:



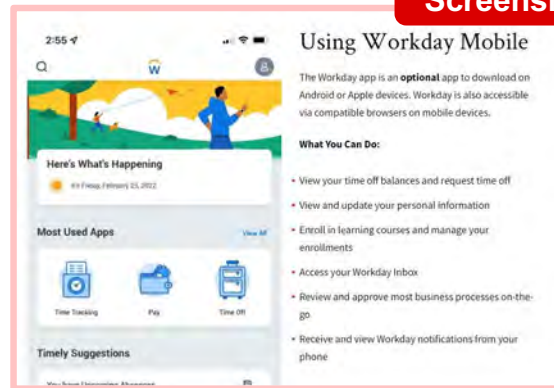
Workday Mobile:



**Elevating our systems to the cloud!**

STAY CONNECTED

**Screenshots**



**Glossary Terms**

**Featured Glossary Terms**

**Employee Self Service**

The ability for an Employee as Self or Contingent Worker as Self to initiate a transaction on their own. This includes:

- tasks and business processes that you can initiate in Workday, such as managing your personal and contact information
- access to your own information, such as your job title, manager, compensation, and personal data

**Worker Profile**

A quick view of each individual Worker's demographic, job, and organization information. Worker data is viewable in the different tabs of the Worker profile, and view/edit access to this data depends on one's security role access.

VISIT OUR GLOSSARY



# Thank You!

[jblancha@umd.edu](mailto:jblancha@umd.edu)

Elevate.umd.edu

**ELEVATE**