

University Senate: State of the Campus Address

Darryll J. Pines, President
March 6, 2024



**Today is
Giving Day!**



- **TODAY, March 6**
- 24-Hour Fundraising Event
- Helps Scholarships, Clubs and Organizations, Academic Departments, Arts, Athletics and Student Services
- ***Every Gift Counts—Thanks for Your Support!***



*Giving Day 2023: Record **\$3.8M**
from **8,967** Donors*

*10 Years, **\$16.5M+***





A Terp in Space!

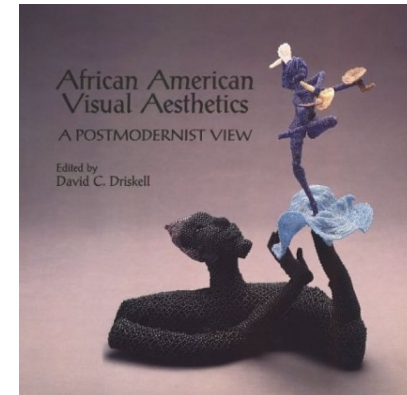
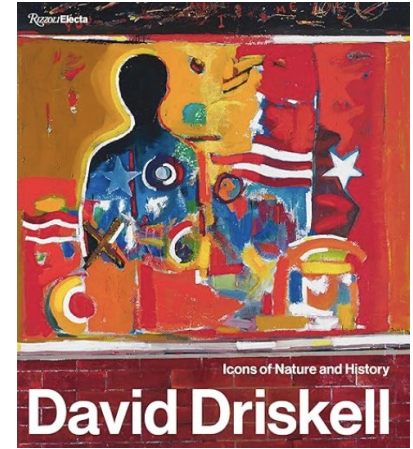
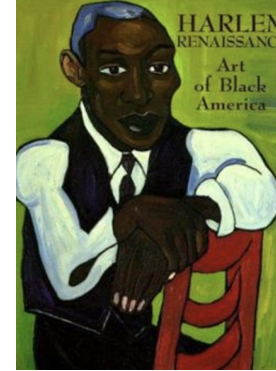






Honoring David C. Driskell





David C. Driskell, 1931-2020

Distinguished University Professor Emeritus of Art, Artist,
Art Historian, Collector, Curator and Philanthropist





Melvin Edwards: Artist Talk & Dedication

David C. Driskell Center for the Visual Arts
and Culture of African Americans and the
African Diaspora

Thursday, April 4, 2024, 4:30-5:50 PM
David C. Driskell Center



Class of 2028





➤ A Distinguished Class

- **45,000** Applications with **24,500** Admits
- **1440-1540** Average SAT
- **34** Average ACT
- **4.5** Average GPA
- **44%** Applied Test-Optional



Notable Highlights

- **80%** invited to **Living-Learning Programs**
- Students from **every county in Maryland**
- Students from all **50 states, plus D.C., Puerto Rico, and Virgin Islands**
- Students from **69 countries** (1300+ total international students, 40% increase)
- **60,000+** expected total applications



UNIVERSITY OF
MARYLAND

**FEARLESSLY
FORWARD**





Continuing Excellence



U.S. News Online Rankings

10 Online Graduate Programs in **Top 15**

Engineering

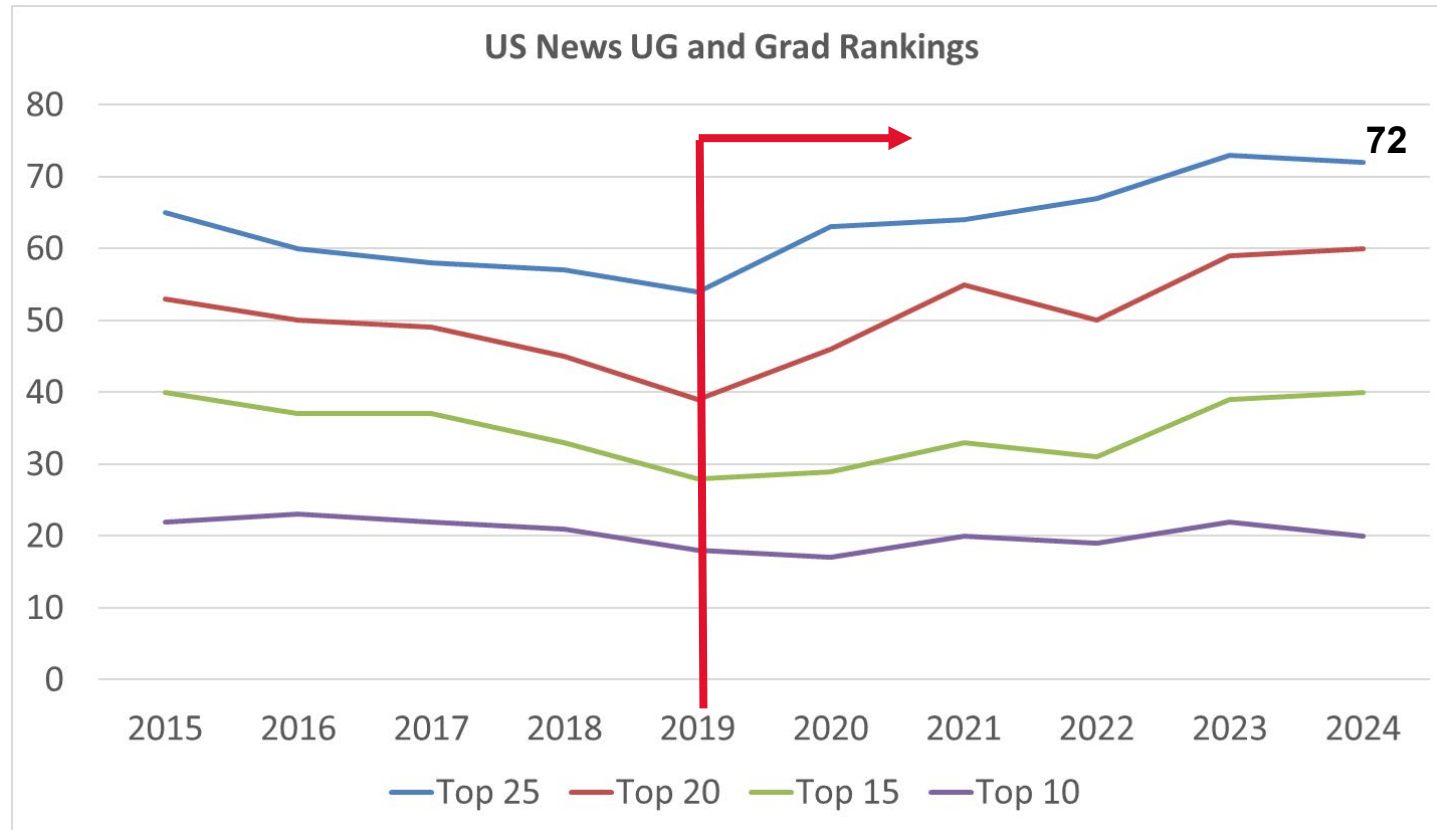
- **#6**: Overall Master's in Engineering Program
- **#10**: Master's in Electrical Engineering
- **#13**: Master's in Engineering Management for Veterans
- **#14**: Master's in Engineering Management

Business

- **#5**: MBA General Management
- **#5**: MBA Marketing
- **#9**: MBA Finance
- **#9**: Master's in Business Program for Veterans
- **#11**: Overall MBA Program
- **#14**: Master's in Business Program



U.S. News Academic Ranking History



National Academy of Inventors Patent Rankings

- **#9** among U.S. public institutions
(**up 5**)
- **#21** in the world (**up 11**)
- **59 of 108** USM patents (**up 18**)
 - Apple trees, intranasal flu vaccine, super strong and durable wood



Top Fulbright Student and Scholar Institution

- **20** recent graduates, graduate students and alums and **7** faculty members in 2023-24
- **One of only 12** universities distinguished in both programs according to *The Chronicle of Higher Education*
- **More than 500** UMD students, alums, staff and faculty have earned Fulbright awards since 1946
- Recognized as top student institution **10 times**, top scholar institution **6 times**



Grand Challenges Update



MARYLAND INITIATIVE FOR LITERACY & EQUITY (MILE) / PI: DJ BOLGER (EDUC)

#1: MILE was awarded nearly \$250K from Prince George's County's Board of Education to run the MILEstones Reading Tutors Program, an after-school elementary reading clinic, at Kingsford Elementary and Hollywood Elementary Schools



SIGNIFICANT ACCOMPLISHMENTS:
#2: MILE is building a strong team, hiring a new Executive Director, a Program Manager for Professional Development, and a new Communications Coordinator



#3: Developed partnerships with the Accountability & Implementation Board for the Blueprint for Maryland's Future led by Dr. Brit Kirwan and Ike Leggett & the State Board of Education

SOCIETAL IMPACT:

MILE has provided professional development for Baltimore City public schools (400+ educators), training for school administrators through the Center for Educational Innovation and Improvement (75+ administrators), and participated in the Literacy Institute for Prince George's County Public Schools (500+ educators)



14 PARTNERSHIPS:

MILE is partnering with 14 organizations, including:

- Maryland State Department of Education
- Prince George's County Public Schools
- Baltimore City Public Schools
- Montgomery County Public Schools
- Benedict Silverman Foundation
- City University of New York



60

UNDERGRAD
STUDENTS

10

GRADUATE
STUDENTS

ENGAGEMENT BY THE NUMBERS:



65

FACULTY

5

STAFF

1,100

EXTERNAL
STAKEHOLDERS

1,240

TOTAL
ENGAGED



THE GLOBAL FEUTURE ALLIANCE / PI: AMY SARKOTA (SPHL)

#1: Created infrastructure, including Project Management, Evaluation & Reporting Infrastructure, Strategic Plan, Communications, Website, Fundraising, Coordination/Connectivity



SIGNIFICANT ACCOMPLISHMENTS:

#2: Launched 9 new research-to-action projects and 8 new associated capacity-building projects in Maryland, Nepal, Israel and Tanzania



#3: Scaled and/or launched multiple experiential learning programs for undergraduate and graduate students at UMD and our partnering international institutions

SOCIETAL IMPACT:

CultivAid, in coordination with the Global FEUTURE Alliance, is developing an app that serves as a working tool for Tanzanian farmers and program members. It will contain features of market linkage, knowledge transfer, and farm management. The mobile app will significantly improve the livelihoods of farmers, increase productivity, and boost food security.



14 PARTNERSHIPS:

Partnering with 14 organizations, including:

- Arava Institute (Israel)
- The Hebrew University of Jerusalem (Israel)
- CultivAid (East Africa/Israel)
- Kathmandu University (Nepal)
- City of Dhulikhel (Nepal)
- City of Hyattsville (Maryland):
- Anne Arundel County Our WAater Program



ENGAGEMENT BY THE NUMBERS:



25

UNDERGRAD
STUDENTS

17

GRADUATE
STUDENTS

33

FACULTY

5

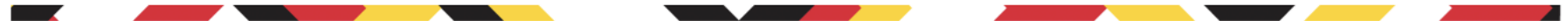
STAFF

610

EXTERNAL
STAKEHOLDERS

690

TOTAL
ENGAGED



ADDRESSING CLIMATE CHALLENGES FOR A SUSTAINABLE EARTH / PI: ELLEN WILLIAMS (GMNS)

#1: Launched two pilot projects, one focused on a small ungauged catchment named Watt's Branch in Montgomery County, and a second to install a network of sea level monitors for a \$90M flood mitigation project in the Annapolis city dock area

SOCIETAL IMPACT:

The team's work to monitor sea levels in Annapolis will provide an early warning system for emergency management decision makers. The Watts Branch project will begin the process of installing a permanent monitoring and sampling system to understand how much the stormwater outflow from Watts Branch impacts the water quality at the drinking water intake.

SIGNIFICANT ACCOMPLISHMENTS:

#2: Hosted 3 hybrid workshops on monitoring of the Chesapeake Bay, climate resilient agriculture, & addressing floods & droughts, freshwater salinization, and air quality



#3: Engaged a diverse cohort of students in experiential learning activities through the High School Internship Program and the Undergraduate Internship Program on 33 climate-related projects

5 PARTNERSHIPS:

- Resilience Authority of Annapolis and Anne Arundel County
- The Maryland Mesonet
- Montgomery County Department of Environment
- Washington Suburban Sanitary Commission (WSSC)
- Resilience Authority of Charles County

ENGAGEMENT BY THE NUMBERS:



xFoundry@UMD





XFOUNDRY @ UMD

- **XPLORE**: Interactive campuswide event choosing a topic
- **XPERIMENT**: Two-course sequence on entrepreneurship with team formation and pitches
- **XCELERATE**: Final Competition
- **XECUTE**: Winner chosen with \$250K-\$2M investment





2025 Xperiance Competition

School Safety

Inaugural Xplore Summit

- 350 Terps, administrators, government leaders, investors and entrepreneurs
- 2026 Competition: Mental Health Care for Young Adults



Catalyzing Breakthroughs



University of Maryland Chemistry Building

- 105,000 total square feet

- 34 research labs

- 2,300-sq.ft. conference room

- 12 meeting and huddle rooms

April 11 Dedication Ceremony



A Vision for the College Park Campus



FEARLESSLY FORWARD

IN PURSUIT OF
EXCELLENCE AND IMPACT
FOR THE PUBLIC GOOD

THE UNIVERSITY OF MARYLAND
STRATEGIC PLAN



**FEARLESSLY
FORWARD**



UNIVERSITY OF
MARYLAND

CAMPUS FACILITIES PLAN



NOVEMBER 2023

Comprehensive Planning Process

- 18-month timeline
- Community engagement through forums, listening sessions, online polling and surveys
- Space-needs assessment
- Peer-benchmarking standards
- Analysis of campus buildings and infrastructure systems
- Evaluation of parking, mobility and connectivity



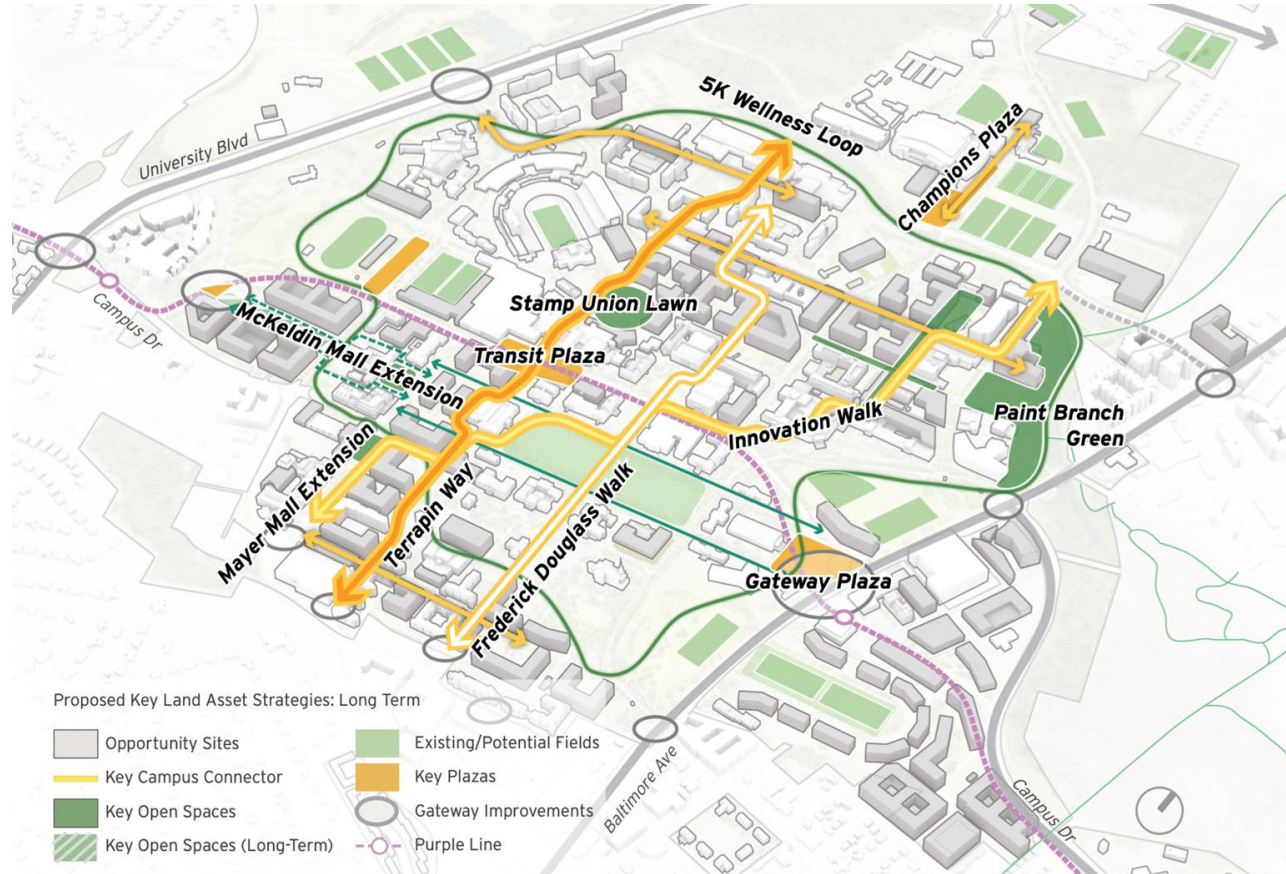
UNIVERSITY OF
MARYLAND

**FEARLESSLY
FORWARD**



Key Projects and Initiatives

- Extend McKeldin Mall
- Develop Grand Armory Gateway
- Create New Stamp Union Lawn
- Develop Central Campus Hub
- Develop Wellness Loop
- New Campus Entrance
- Create Signature Campus Walks
 - Terrapin Way
 - Innovation Walk
 - Frederick-Douglass Walk





Terrapin Way, next to McKeldin Library





Gateway Plaza, next to Armory and Purple Line





New Campus Entrance





Stamp Student Union and Campus Drive



90 Years of Testudo





A vibrant campus scene featuring a large green lawn, trees with autumn foliage, and a building in the background. The text 'FEARLESSLY FORWARD' is overlaid in a white, bold, sans-serif font. The word 'FEARLESSLY' is on the top line, and 'FORWARD' is on the bottom line. The letters are cut out, revealing the background scene through them. The text is slightly tilted to the right.

FEARLESSLY

FORWARD