

University Senate: State of the Campus Address

Darryll J. Pines, President
November 3, 2022



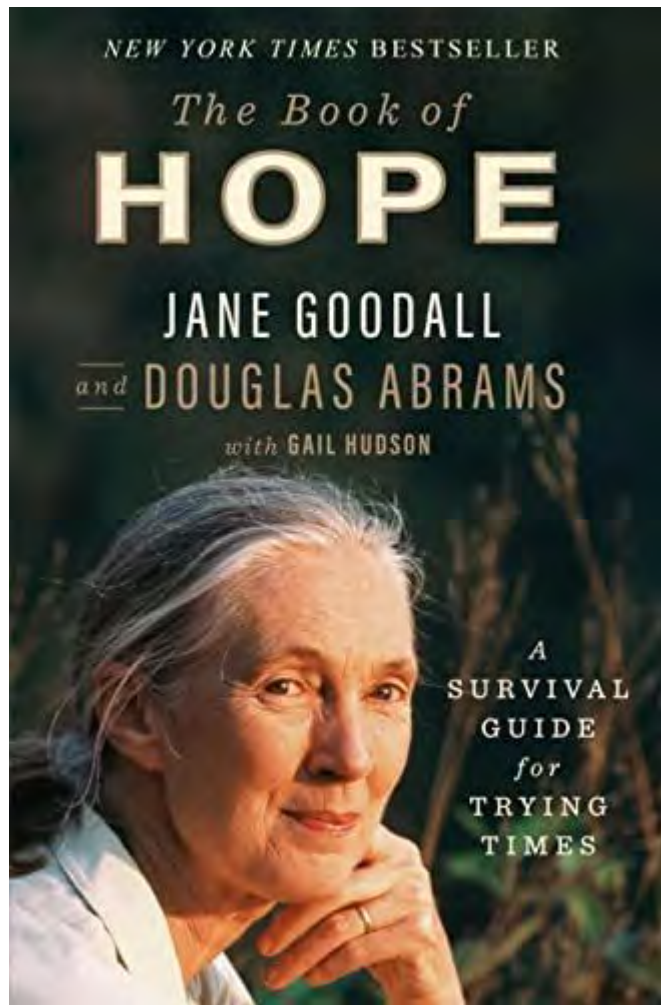
A vibrant campus scene featuring a large green lawn, trees with autumn foliage, and buildings in the background. The text 'FEARLESSLY' is overlaid in a white, bold, italicized font.

FEARLESSLY

FORWARD



Jane
Goodall
Institute



“Even as I speak, there are young people planting trees, looking at ways to reduce single-use plastics, doing fundamental research. Some of them are volunteering in soup kitchens, some of them are raising money to help refugees.”





We Take on Humanity's Grand Challenges

Our education, research, scholarship and creative activities, and service are designed to accelerate solutions to humanity's grand challenges—within our communities and around the globe.

University of Maryland
Grand Challenges Grant Program



Maryland Initiative for Literacy & Equity (MILE)

**PARTICIPATING
SCHOOLS AND COLLEGES**

EDUC

ARHU

BSOS

INFO

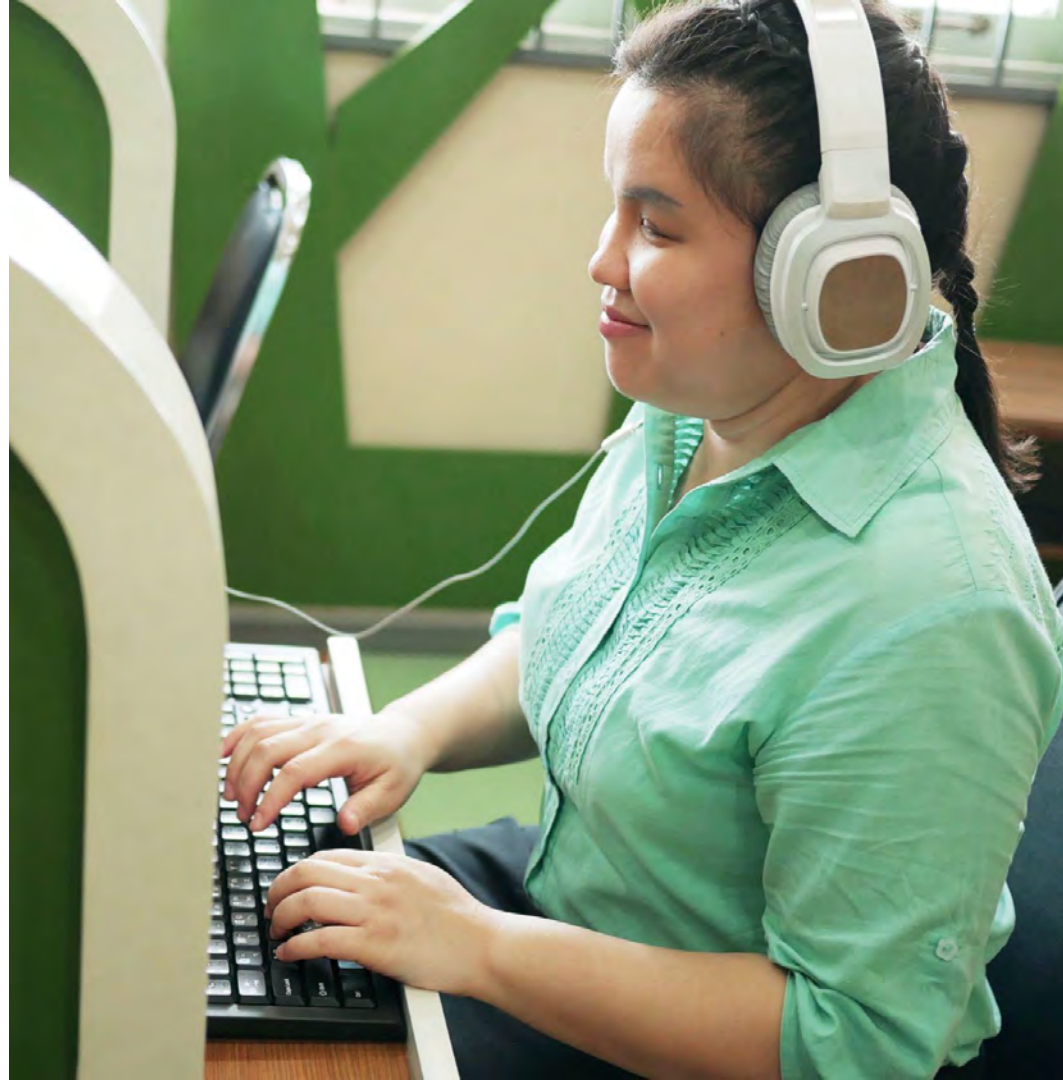


Making the World of Digital Technologies Accessible for People with Disabilities: The Trace Center Reboot

**PARTICIPATING
SCHOOLS AND COLLEGES**

INFO

SPH





Center for Critical Urban Studies

**PARTICIPATING
SCHOOLS AND COLLEGES**

ARCH

ARHU

SPH



Addressing Climate Challenges for a Sustainable Earth

**PARTICIPATING
SCHOOLS AND COLLEGES**

CMNS

BSOS





Pandemic Preparedness, Response, Management and Resilience Institute

**PARTICIPATING
SCHOOLS AND COLLEGES**

SPHL

ENGR

ARHU

UHC



Global FEWture: Advancing Transformative Food-Energy-Water Solutions to Ensure Community Resilience in a Changing Climate

**PARTICIPATING
SCHOOLS AND COLLEGES**

AGNR

ARCH

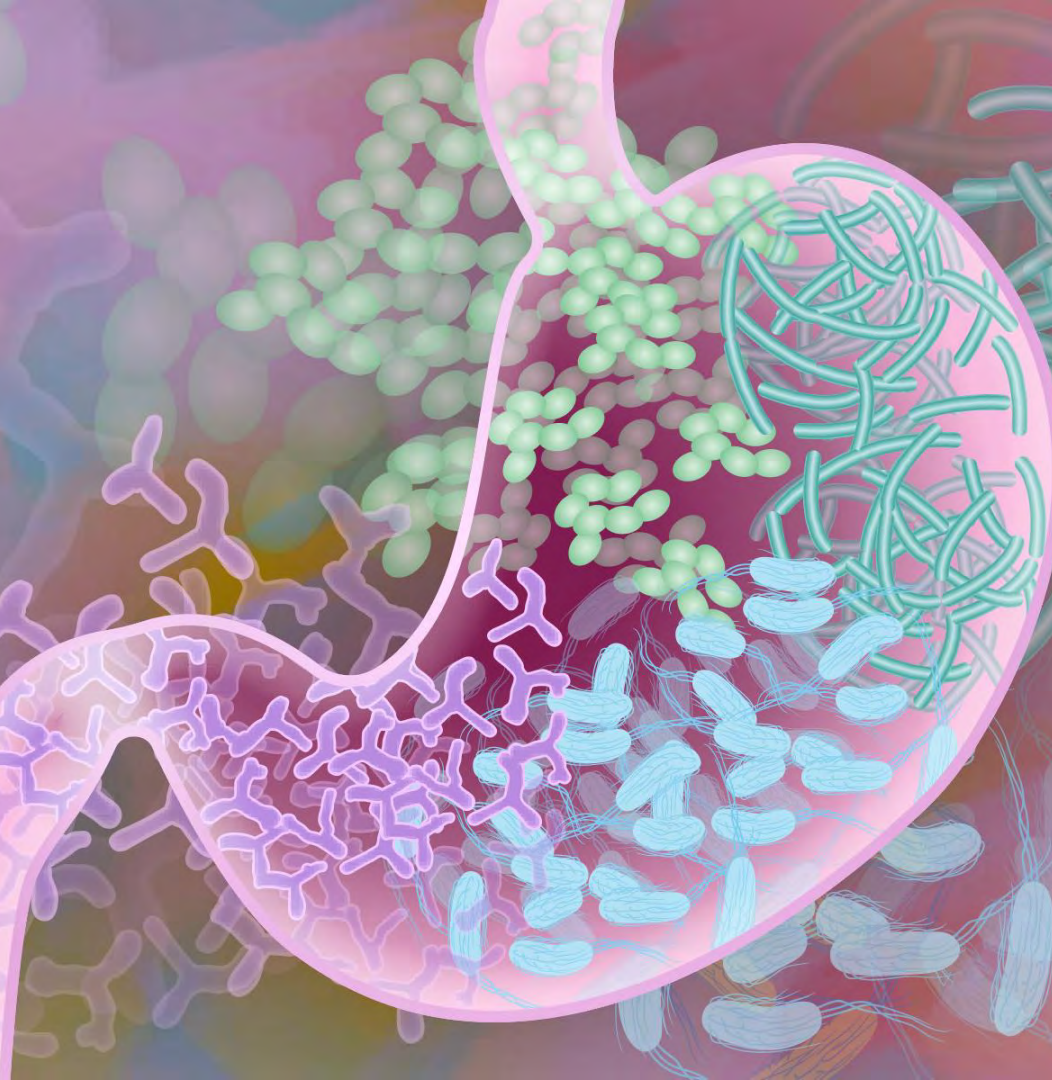
BSOS

CMNS

ENGR

SPH





Center of Excellence in Microbiome Sciences

**PARTICIPATING
SCHOOLS AND COLLEGES**

AGNR

CMNS



Institute For Democracy Research, Education, and Civic Action

PARTICIPATING SCHOOLS AND COLLEGES

BSOS

EDUC

JOUR

SPP





We Reimagine Learning

Lead in the development of innovative and inclusive approaches for teaching and learning.

Academic Excellence

4,264

**TOTAL
FACULTY**

5

NOBEL PRIZE RECIPIENTS

Herbert Hauptman (chemistry, 1985)
William Phillips (physics, 1997)
Raymond Davis (physics, 2002)
Thomas Schelling (economics, 2005)
John Mather (physics, 2006)

61

**MEMBERS OF THE
NATIONAL ACADEMIES**

9

**AAAS FELLOWS
IN THE LAST 3 YEARS**

16

**PULITZER PRIZE
WINNERS**

2

RHODES SCHOLARS

Tom McMillen '74
Fang Cao '15

8

**FULBRIGHT SCHOLARS
IN 2021-22**

Tied for #3 among Doctoral Institutions
54 students and scholars in last 5 years

5

**ALUMS ARE MACARTHUR
GENIUS AWARD
RECIPIENTS**

2022 Teaching and Learning Innovation Grants

97

Course-Level Grants
(Max \$20,000)

18

Program-Level Grants
(Max \$70,000 + matching funds)

\$2.7M

TEACHING AND LEARNING

UMD students will...

Learn

how to use photogrammetry, 3-D modeling, and 3-D printing to produce 1:1 copies of ancient art works, and shows them how to adapt a Bronze Age Greek floor decoration to generate a chalk replica in the courtyard of the Art-Sociology Building.

(PI: Emily Egan, ARHU)

Collaborate

with local nonprofits, community organizations, and experts to understand strategies for social change in Prince George's County.

(PI: Ebonie Cooper-Jean, SPP)

Partner

with an African university to explore agricultural production, food security and international development. They will develop extension activities that support farming communities.

(PI: Taryn Devereux, AGNR)

Explore

Black cultural historic sites in and around the College Park area, and will produce a "cultural exhibit" final project.

(PI: Robert Chflet, BSOS)



UMD students will...

Engage

with augmented reality and virtual reality learning experiences to partner with PepsiCo leadership and learn about their "farm to table" supply chain.

(PI: Humberto C. Coronado, BMGT)

Use

artificial intelligence and machine learning to design robots that can explore the world outside the classroom.

(PI: Jacelyn Lopez Roshwalb, ENGR)

Assess

freshwater species and learn about their genetics and evolution using DNA barcoding.

(PI: Bill Lamp, CMNS)

Apply

improvisation techniques as a responsive and active teaching method in K12 classrooms.

(PI: Angela Christine Stoltz, EDUC)



Grant Outcomes

43%

of projects will bring students out of the classroom.

Almost half of the funded projects include field trips, service projects, internships, or professional partnerships that bring students out of the classroom, and let them apply their growing knowledge to the real world. Examples of partnerships include Pepsico, Prince George's Public Schools, The National Park Service, Bowie State University, and the Capital News Service.

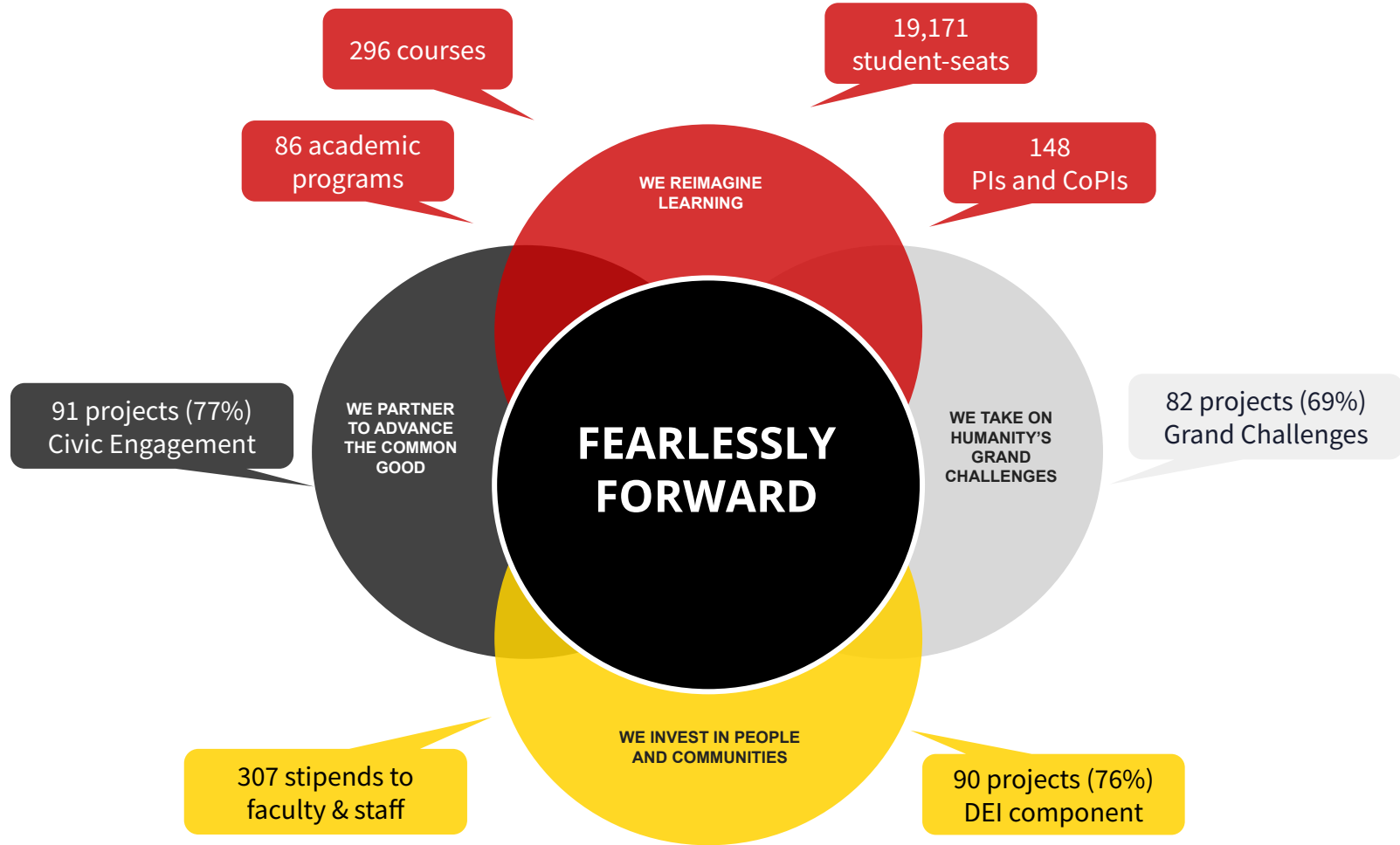
46


projects will redesign GenEd courses.

By making our General Education courses more experiential, students will have the opportunity to do meaningful work and find new passions in disciplines across the University.



IMPACT





We Partner to Advance the Common Good

Our future is tied to and interconnected with our local, state, national, and international partners. We will create and sustain partnerships that allow our research to have impact locally and globally, our education to prepare students for civic engagement and impact, and our service to create solutions for a more equitable, sustainable, and resilient world.



UNIVERSITY OF MARYLAND

change the world.

Change the world.
It's our policy.



**Change
the world.
It's our
policy.**



**SCHOOL OF
PUBLIC
POLICY**

**change
the world.
It's our
policy.**



**SCHOOL OF
PUBLIC
POLICY**

School of
Public Policy
Building Dedication

UNIVERSITY OF MARYLAND



MARYLAND MESONET



COLLEGE OF
COMPUTER, MATHEMATICAL,
& NATURAL SCIENCES





UNIVERSITY OF
MARYLAND

JAMES CLARK
SCHOOL OF ENGINEERING





We Invest in People and Communities

Lead the nation in living a commitment to equity, diversity, and inclusion in all we do.



UNIVERSITY OF
MARYLAND
Yahentamitsi
Dining Hall
BLDG 436 • 4136 STADIUM DR



*A Place to
Go to Eat*


DIVISION OF
STUDENT AFFAIRS
DINING SERVICES



BUILDING
DEDICATION
11.01.2022

YAHENTAMITSI



YAHENTAMITSI
Dining Hall











“I never would have imagined in 1955 when I walked onto this campus or in 1959 when I walked off with my degree in hand, that anyone here would ever speak my name again. I knew I had succeeded, but I did not realize the significance of my journey.”

Elaine Johnson Coates



**Do you know what
Opportunity looks
like?**



Introducing the... Terrapin Commitment

\$20 million annual investment in need-based scholarships

The University of Maryland is launching a major new university initiative to invest up to \$20 million annually in support for low income Marylanders to improve graduation rates, reduce student debt, and provide pathways for promising students within the state of Maryland.





**Who has
Maryland
Pride?**



A vibrant campus scene featuring a large green lawn, trees with autumn foliage, and a building in the background. The text 'FEARLESSLY' is overlaid in a large, bold, white font with a black outline, set against a white rectangular background.

FEARLESSLY

FORWARD